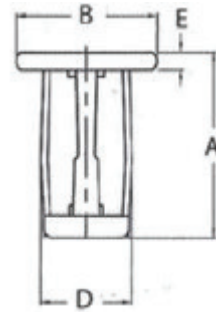




# JACK NUTS

Jack Nuts are used for light duty, thin, or brittle material. They accommodate slightly oversized holes with a large back side footprint similar to a wall anchor. Jack Nuts utilize a dedicated manual tool for proper installation.

Our jack nut installation tool is designed to effortlessly set jack nuts in sizes ranging from 6-32 – 1/4-20”, and M4 – M6. It works by threading the bolt to the jacknut, then dropping the component in the slot of the tool, inserting it into the pre-drilled hole, and squeezing until set. Pressing the release lever, then tightening completes the installation.



Thread Size	Grip Range	PART NUMBER	A	B	E	D
<b>INCHES</b>						
6-32	.000-.197	JN632197S	.670	0.472	0.063	0.315
6-32	.197-.394	JN632394S	.866	0.472	0.063	0.315
10-24	.000-.197	JN1024197S	.709	0.547	0.063	0.394
10-24	.197-.394	JN1024394S	.906	0.547	0.063	0.394
1/4-20	.000-.197	JN2520197S	.709	0.63	0.063	0.472
1/4-20	.197-.394	JN2520394S	.906	0.63	0.063	0.472
<b>METRIC</b>						
M4X0.7	.0-5.0MM	JN47050S	17.0	12.00	1.60	8.00
M4X.07	5.0-10.0MM	JN47010S	22.0	12.00	1.60	8.00
M5X0.8	.0-5.0MM	JN58050S	18.0	13.90	1.60	10.00
M5X0.8	5.0-10.0MM	JN58010S	23.0	13.90	1.60	10.00
M6X1.0	.0-5.0MM	JN61050S	18.0	16.00	1.60	12.00
M6X1.0	5.0-10.0MM	JN61010S	23.0	16.00	1.60	12.00